

What is Freight Forwarding?

- A service used by companies that deal in International Export / Import.
- Service aims to move products from origin to the destination in good condition and on time.

What is a Freight Forwarder?

- An agent performing on behalf of Exporter / Importer the routine tasks such as loading / unloading of goods, storage of goods, arranging local transportation, facilitating international movement of goods etc.
- Also, helps customers to ship in accordance with the INCOTERMS.
- Provides services directly or through agents/sub-contractors.
- Often engages in Consolidation of cargo (LCL) shipments from individual shippers and moves them in FCL container.

Range of services

- Ocean- LCL & FCL.
- Air shipments.
- Cross Country Shipments.
- Drayage services.

How we work?

- Sales team sends the rate requests to Abhishek/Team6 who then gives the quote to them to pass it on to the prospective customers.
- Upon approval of rate from the customers, Abhishek secures the space with carriers / agents and tries his best to release the space on time.
- Implementation of the new account and designating the ISR to the customer.
- ISR then takes over the operations of the shipment and keeps the customer updated.
- Customer is also advised about the ISR.

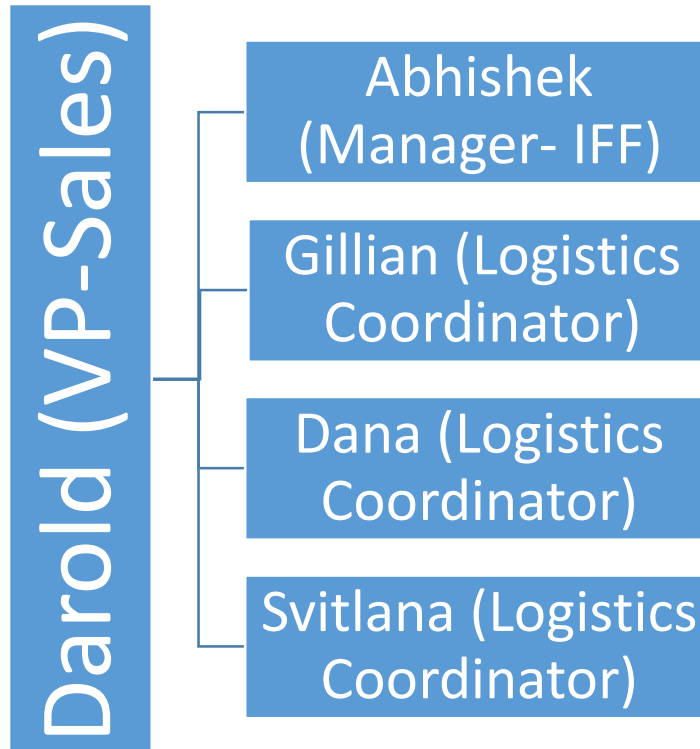
Procedure for Export Shipments

- Quote customers for Ocean/Air shipments for Door to Door / Door to Port / Port to Port movements across the globe.
- Receive approval for quote(s) and book the space.
- Coordinate with shipper(s) for meeting the CY & SI cut-off. Perform Door pickup if needed.
- Send the Draft B/L for approval to the Shippers.
- Send updates to the Shippers for S.O.B confirmation along with the invoice(s) for our services.
- Monitor the shipments and provide updates to the customers.

Procedure for Import Shipments

- Quote customers for Ocean/Air shipments for Door to Door / Door to Port / Port to Port movements across the globe.
- Receive approval for quote(s) and book the space.
- Coordinate with shippers through overseas agents for meeting the CY & SI cut-off. Perform Door pick up if needed.
- Send the Draft B/L for approval to the Importers.
- Send updates to the customers for S.O.B confirmation.
- Monitor the shipments and provide updates to the customers.
- Send Arrival Notices to the Customs Brokers of Importers.
- Perform the door delivery if needed.
- Invoice the customers for our services.

IFF TEAM



- Abhishek Varma- has 15 years of experience in IFF and heads the IFF department. The responsibilities include overseeing day to day operations, managing and appointing new partners/carriers across the globe, providing competitive pricing to clients, securing space for the customers, managing the Profitability of IFF department.
- Svitlana (Logistics Coordinator)- has more than 20 years of experience in International Freight forwarding. She handles the Import/Export shipments of our customers-Weber, Newell, NGD Kids, Quality Classrooms, Ram Industries etc. Responsible for generating reports, creating files in CargoWise, billing the shipments on time etc. for her clients.
- Dana (Logistics Coordinator)-has more than 22 years of experience in International Freight forwarding. She handles the Import/Export shipments of our customers- Weber Canada, Henry Company, Mountain Sports Distribution, Royal Brush, XPT Grains etc. Responsible for generating reports, creating files in CargoWise, billing the shipments on time etc. for her clients.
- Gillian (Logistics Coordinator)-has more than 28 years of experience in International Freight forwarding. She handles the Import/Export shipments of our customers- Dominion Color, Diageo, H2 Brands, Stonehenge Global Seeds, Kwaliti Imports, Genuine Comfort etc. Responsible for generating reports, creating files in CargoWise, billing the shipments on time etc. for her clients

Value added services

- Advice on optimizing transport costs: freight charges, special documentation costs, customs clearance expenses, customs duty
- Cargo insurance: advantageous conditions at competitive premiums
- Advice for proper packaging, labeling, loading and stowage of merchandise
- Tracking reports.
- Tailored solutions for each project.
- Supply chain optimization advice on the best means of transport and the best route for a shipment according to origin, nature of the merchandise, destination, seasonality, danger and urgency of the merchandise (air, sea, rail or road)
- Customs advice, from the appropriate tariff item for your merchandise to the necessary documents for customs clearance, dedicated storage and logistics services.